

International Mobility Lab

Students in Environmental and land planning engineering



Planning a mobility experience - getting oriented

- The reference regulation:
 - POLIMI regulation → the 2024/25 Call
 - Additional ICAT regulation
- Partner Universities
- Preparing the preliminary study plan at the Partner University
 - Mobility plan
 - Learning Agreement
- Non ECTS credits (non-EU locations)
- Transcript of records
- Grading systems - conversion rules

The call

Call for International Mobility (2 per year, November and April)

<https://www.polimi.it/en/campuses-and-services/international-mobility/study-abroad/the-call>

**To read carefully!!
Deadlines are mandatory**

The 2024/25 call

<https://www.polimi.it/en/campuses-and-services/international-mobility/study-abroad/erasmus-and-other-programmes/1-how-to-apply>

ERASMUS+

WORLD WIDE EXCHANGE PROGRAMMES (BILATERAL AGREEMENTS)

TIMELINE

1 - HOW TO APPLY

2 - BEFORE DEPARTURE

3 - DURING THE MOBILITY

4 - AT THE END OF THE MOBILITY

The International Mobility Unit publishes the Call for International Mobility twice a year, once in November and then in April. From November 22nd 2022 to January 11th 2023 at midday (CET) the first Call for International Mobility 2022/2023 is open and you can apply for a period of study or research for a thesis in a partner institution. At this page you can find the Call and the guidelines, the [FAQ](#) and [tutorial for the application](#). Attention: read the call concerning the Schools that will be enrolled in the next academic year.

AUIC SCHOOL (ARCHITECTURE, LANDSCAPE, URBAN PLANNING STUDY PROGRAMMES)

SCHOOL OF DESIGN

SCHOOLS OF ENGINEERING AND AUIC (ENGINEERING STUDY PROGRAMMES)

Read the [Call for the Schools of Engineering and AUIC \(Engineering Study Programmes\)](#).

What	When	Link
------	------	------

- **The CALL for schools of engineering**
- **Application tutorial**
- **Timing**
- **FAQ**

TECNICO MILANO 1863

SCHOOLS OF ENGINEERING AND AUIC (ENGINEERING STUDY PROGRAMMES)

Read the [Call for the Schools of Engineering and AUIC \(Engineering Study Programmes\)](#).

What	When	Link
Online application	From 22/11/2022 to 11/01/2023 at midday	Apply
Results of Double Degree first assignment	31/01/2023	
Acceptance by selected student	From 31/01/2023 to 06/02/2023 by midday	
Results of Double Degree second assignment	09/02/2023	
Acceptance by selected student	From 09/02/2023 to 13/02/2023 by midday	
Meeting with students who have accepted a Double Degree	tbd	
Results of Mobility for Study first assignment	23/02/2023	
Acceptance by selected student	From 23/02/2023 to 02/03/2023 by midday	
Meeting with students who have accepted a Mobility for Study	tbd	
Results of Mobility for Study second assignment	08/03/2023	
Acceptance by selected student	From 08/03/2023 to 14/03/2023 by midday	
Meeting with students who have accepted a Mobility for Study	tbd	

PHD SCHOOL

The call

The Call is addressed to all students enrolled in:

- Laurea (equivalent to Bachelor of Science) courses
- Laurea Magistrale (equivalent to Master of Science)
- Single Courses

Sets the rules for:

- **INTERNATIONAL DOUBLE DEGREE MOBILITY (dl)**
- **INTERNATIONAL MOBILITY FOR STUDY (ms)**

dl Rules depend on the agreement with the partner University. In most cases, such programmes require: attendance from 1 to 2 academic years at a partner University

- a minimum of 60 ECTS credits at Politecnico di Milano
- up to 120 ECTS credits (comparable with Italian CFU credits), of which up to 60 recognised by Politecnico di Milano
- defending the Degree thesis at Politecnico di Milano (and where required at the partner University)

ms The duration **depends on the agreement with the partner Institution → 2-12 months.**

Mobility for Study generally lasts for one semester extension to be agreed between Politecnico di Milano and the host Institution.

SCHOOL OF CIVIL, ENVIRONMENTAL AND LAND MANAGEMENT ENGINEERING

SCHOOL TEACHING STUDENTS

STUDENTS UNIVERSITY CAREER

Admission to Laurea and Laurea
Magistrale

Study plan and OFA

Internships

Changing programme & Transfer

SERVICES

Guidance and Open Day

Tutoring

Trouble Ticketing

Education ombudsman

Libraries

OPPORTUNITIES

Scholarships and Graduation Awards

Experience Abroad

Dual Career

Sport

Welcome to the School of Civil, Environmental and Land
Management Engineering

Reference persons

- Elena Ficara – elena.ficara@polimi.it for students planning a short-term mobility in Austria, Belgium, Finland, France, Germany Greece, Ireland, Netherlands, Poland, Portugal, Czech Republic
- Luigi Zanzi – luigi.zanzi@polimi.it for students planning a double degree project
- Luca Alberti – luca.alberti@polimi.it for students planning a short-term mobility in Extra EU countries, Sweden, Danmark
- Matteo Giuliani – matteo.giuliani@polimi.it for students planning a short-term mobility in Spain

Eligibility and constraints for ICAT (in addition to what stated in the CALL)

Eligibility:

- M.Sc. students → no restrictions
- B.Sc. students → (CFU \geq 100) & (average grade \geq 23/30) when applying can do the mobility at the 1st year of MSc
- B.Sc. students → (CFU \geq 55) & (average grade \geq 23/30) when applying can do the mobility at the 3rd year of BSc

Maximum duration of short-term mobility: at B.Sc. level = 6 months; at M.Sc. level = 1 year (even divided into two non-consecutive periods and at two different partner universities).

Max CFU validated from the mobility: max 30 at the B.Sc. Level; 60 at the M.Sc. level (excluding students enrolled in a double degree program).

NOTE: in order to obtain the M.Sc. degree, the POLIMI regulation requires that a minimum of 60 CFU of regular courses (excluding the CFU of the final degree examination and of internal and external stages) be taken at POLIMI.

Thesis: M.Sc. students are allowed to prepare their **thesis** during a short-term mobility program

Note: Additional requirements (e.g., minimum average grade, language certificates) may be imposed by the partner institutions, as specified in the agreement with POLIMI.

How to choose your Partner University

<https://www.polimi.it/en/campuses-and-services/international-mobility/international-mobility/>

Map

List

Filter locations by:

SCHOOL

TYPE OF AGREEMENT



How to choose your Partner University

"Map of partner Universities and Mobility Agreements" :

- details on each agreement,
- eligible study programmes,
- references to the web pages for exchange students
 - educational offer
 - language of delivery of the offered courses,
 - academic calendar,
 - the language requirements,
 - the application submission deadlines etc.



How to choose your Partner University

<https://www.polimi.it/en/services-and-opportunities/experience-abroad/map-of-partner-universities-and-mobility-agreements/>





KONGENS LYNGBY , DENMARK

The Technical University of Denmark (DTU) is a leading technical university with a world-class reputation. DTU is ranked as one of the foremost technical universities in Europe and continues to set new records in the number of research publications. The international dimension is of vital importance to DTU, one fifth of DTU's scientific staff is recruited internationally, and the numbers of students from abroad are increasing continuously. DTU has contributed to Denmark achieving a leading position within Technical Design, Wind Energy, Biotechnology, Electronics and Telecommunication. For almost two centuries, DTU has been dedicated to fulfilling the vision of H.C. Ørsted - the father of electromagnetism - who founded the university in 1829 to develop and create value using the natural sciences and the technical sciences to benefit society.

OPPORTUNITIES AVAILABLE





DOUBLE DEGREE UE

[Partner website for exchange students](#) [Polimi website](#)

 2 positions   **Engineering**
LAUREA MAGISTRALE (SECOND DEGREE), LAUREA SPECIALISTICA A CICLO UNICO 

ERASMUS PROGRAMME

[Partner website for exchange students](#) [Polimi website](#)

 20 positions   **Engineering**
LAUREA MAGISTRALE (SECOND DEGREE) 

How to choose your Partner University

A dedicated excel sheet is available at the school Website with useful infos (other than those already available on the Partner University Map). It contains 2 sheets:

- EU
- Extra-EU → note that they have a different grading systems

EU agreements for students of Environmental and Land Planning Engineering							M1A	ME1	M2A	M2B	M2C	M2D	Sei
Erasmus code	Country	City	Istitution	Istitution website	Polimi website	(third programme year)							
N STAVANG01	Norway	Stavanger	UNIVERSITY OF STAVANGER	https://www.uib.no/en		No	☹️	☹️	☹️	😊	☹️		
N TRONDHE01	Norway	Trondheim	NTNU - NORWEGIAN UNIV. SCIENCE AND TECHNOLOGY	https://www.ntnu.edu/studies/exchange	https://polimi.it/campus-europe/mobilita-internazionale/mobilita-internazionale/programmi/tecnologia-naturvitenskapelige-universitet	No	☹️	😊	😊	😊	😊		
NL DELFT01	Holland	Delft	TECHNISCHE UNIVERSITEIT DELFT	https://www.tudelft.nl/en/education/admission-and-application/exchange-students	https://polimi.it/campus-europe/mobilita-internazionale/mobilita-internazionale/tecnische-universiteit-delft	No	☹️	😊	😊	😊	😊		
NL WAGENIN01	Holland	Wageningen	UNIVERSITEIT WAGENINGEN	https://www.wur.nl/en/Education/Programmes/Study-Aboard-and-Exchange-Students.htm	https://polimi.it/campus-europe/mobilita-internazionale/mobilita-internazionale/universiteit-wageningen	No	☹️	😊	😊	😊	😊		
					https://polimi.it/campus-europe/mobilita-internazionale/mobilita-internazionale/universiteit-wageningen								

How to choose your Partner University

DISCLAIMER: it is up to each candidate to verify that the didactic offer in their Partner University of choice is valid for her/his specific case. Even P.U. classified as very good may be inadequate in specific cases



Student/University specific constrains may apply such as:

- Your personal Study Plan (max flexibility at the first year of the Master program, min flexibility at last semester of M.Sc., B.Sc.)
- Constrains related to min number of CFU as (B), (C) class of courses → **to be verified by the student**
- distribution of courses within semesters
- hemi-semesters may apply
- ...

Be careful with French P.U. (small courses, 2° semester may have a poor offer, bloc of courses may have to be picked instead of single one)

How to choose your Partner University

General hints

When planning your mobility, leave the possibility to pick **elective courses** → they do not provide “crucial topics” within your study track and may be substituted with different courses that are of interest for ICAT students but that are not available at POLIMI

The correspondence of the didactic content for **compulsory courses** has to be reasonably covered since they are considered as foundational in your study track

How to choose your Partner University

General hints

B.Sc. Students have to be especially careful with:

- Hydrology (**7+1** CFU)
- Soil mechanics (**7+1** CFU)
- Territorial planning (**7+1** CFU)

They have to be corresponded with **8** CFU (since you will not be able to take part in the project providing the 1 CFU).

The CFU valid for the final degree is validated by the responsible teacher (Profs Ravazzani, Sterpi, Fossa).

(note: They have to be reminded that their course was taken during the Erasmus exchange)

How to choose your Partner University

General hints

- Be aware of your deadlines and seek support in advance
- Coordinators have many other duties besides supporting Erasmus students, avoid last minute requests which may not be addressed in time → as a general guideline, allow 1 week for any reply/reaction

Preparing your study plan – Mobility plan.doc

A word file named “**Mobility Plan**” is available at the School Website.

- It is meant to be used when sharing your proposal for your study plan abroad with your reference coordinator.
- It includes personal infos on the student career and all details required for an informed evaluation of the student’s proposal.

Preparing your study plan – Mobility plan.doc

ECTS credits

Proposed study plan and equivalence table

Info Courses at Politecnico					Info courses at the foreign university			
Course name	Professor	Course ID	CFU	Mand. / Elect.	Course name	Course ID	CFU	integration? (reserved to the program coordinator)
Modelli statistici e processi stocastici	Epifani	089112	6	M	<u>Calculo y estadística</u>	125001101	6	
<u>Photogrammetry and photointerpretation</u>	<u>Reguzzoni</u>	097464	10	M	<u>Redes fotogrametricas</u> + <u>Teledetección aplicada</u>	125005304 + 125000507	4,5 + 4,5	
<u>Maritime engineering</u>	Passoni	095855	8	E	<u>Ingeniería del litoral</u> + <u>Ordenacion y gestion de zonas costeras</u>	45001434 + 123000166	3 + 4,5	

Total ECTS credits should not differ by more than 5% (10% in exceptional cases).

You do not need to collect approval from each professor of each course you are taking at the Partner University, unless your coordinator asks you to

Preparing your study plan – Mobility plan.doc

Table 1: info needed for the equivalence evaluation

	Info POLITECNICO	Info <u>Foreign institution</u>
<u>Name</u> of the <u>class</u> :	Modelli statistici e processi stocastici	<u>Calculo y estadística</u>
CFU	6	6
<u>Semester</u>	I	I
Professor	Epifani	
Professor Email	ilenia.epifani@polimi.it	
Program	Propagazione della varianza. Distribuzione gaussiana multivariata. Funzioni e rette di regressione nel caso discreto finito. Distribuzioni di funzioni di v.a.; metodo della <u>f.d.r.</u> e della trasformazione; trasformazione integrale di <u>probabilita'</u> . Le variabili aleatorie <u>min</u> e Max. Distribuzione della somma di v.a.	1. Estadística descriptiva 1.1. Conceptos generales. Tipos de variables estadísticas y sus representaciones gráficas. 1.2. Medidas de posición y centralización. 1.3. Medidas de dispersión y forma. 1.4. Errores en las observaciones. Diagrama de cajas. 2. Distribuciones bidimensionales. Regresión y correlación.

https://www.upm.es//comun_gauss/publico/guias/2016-17/1S/GA_12GT_125001101_1S_2016-17.pdf

Preparing your study plan

On-line services/international mobility

ARCHIVIO INSEGNAMENTI CONVALIDATI NELL'AMBITO DEGLI SCAMBI INTERNAZIONALI


Per poter accedere alla visualizzazione delle convalide selezionare lo scambio di interesse e l'ateneo

Scuola	Scuola di Ingegneria Civile, Ambientale e Territoriale	Cambia
Corso di studio	Ing - Civ (Mag.)(ord. 270) - MI (489) INGEGNERIA PER L'AMBIENTE E IL TERRITORIO - ENVIRONMENTAL AND LAND PLANNING ENGINEERING	Cambia
Scambio	ERASMUS	Cambia
Stato	SPAGNA	Cambia
Ateneo	UNIVERSITAT POLITECNICA DE VALENCIA	Cambia








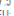
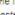
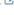

Convalide

Cfu	Insegnamento piano	Insegnamento estero
0.0		
0.0		
0.0		
10.0	051278 - PHOTOGRAMMETRY AND DRONE SURVEYING	REMOTE SENSING DIGITAL IMAGE PROCESSING
10.0	051629 - SLOPE STABILITY [I.C.]	ROCK MECHANICS, TUNNELS AND UNDERGROUND WORKS GEOTECHNICAL ENGINEERING FOR TRANSPORT INFRASTRUCTURES
10.0	088717 - TRATTAMENTI DELLE ACQUE DI RIFIUTO	WATER TREATMENT
10.0	088717 - TRATTAMENTI DELLE ACQUE DI RIFIUTO	WASTE-WATER TREATMENT ENVIRONMENTAL QUALITY ASSESSMENT
10.0	088717 - TRATTAMENTI DELLE ACQUE DI RIFIUTO	WASTEWATER TREATMENT ADVANCED DESIGN AND SIMULATION OF WASTEWATER TREATMENT PLANTS
6.0	089112 - MODELLI STATISTICI E PROCESSI STOCASTICI	STATISTICS
10.0	089122 - TELERILEVAMENTO	PHOTOGRAMMETRY SPATIAL GEODESY
10.0	090004 - IDRAULICA APPLICATA E IDROGEOLOGIA	HIDRÁULICA FLUVIAL Y RESTAURACIÓN DE RÍOS HIDROGEOLOGÍA AVANZADA
10.0	090869 - IMPIANTI SPECIALI IDRAULICI	APROVECHAMIENTOS HIDRÁULICOS Y ENERGÉTICOS INFRAESTRUCTURAS HIDRÁULICAS URBANAS
8.0	095855 - MARITIME ENGINEERING	MARITIME WORKS
8.0	095855 - MARITIME ENGINEERING	PORTS AND COASTS

Online Learning Agreement (OLA)

Versione del: 10/09/2022 18:12	Inviato al docente il: 10/09/2022 18:14	Presentazione Changes: ●	Crediti totali	Stato delle corrispondenze
Stato della versione del LA: ✔ Approvato ✔	Data della valutazione: 15/09/2022 18:49	Apertura changes: 20/08/2022	Totale crediti esteri 30.0	Approvate 3
Scarica l'OLA approvato in formato pdf: 		Chiusura changes: 10/10/2022	Totale crediti esteri in ECTS 30.0	
			CFU totali PolIMI 28.0	

Corrispondenze

Corrispondenza n.	Insegnamenti PolIMI da piano o da manifesto	Corsi esteri	Nota del docente
#1	<p>057942 APPLIED HYDRAULIC AND HYDROGEOLOGY</p> <p>CFU: 10.0 AC: 2* SEM: 2* </p>	<p>Applied Hydrogeology</p> <p>Crediti esteri: 7.5 Conversione in CFU: 7.5 Semestre: 1* Livello: M Link al syllabus: </p> <p>Esame superato: S È richiesta convalida: S</p> <p></p>	
#2	<p>095854 WATER AND FOOD SECURITY</p> <p>CFU: 8.0 AC: 1* SEM: 1* </p>	<p>Sustainable Food Production and Consumption</p> <p>Crediti esteri: 7.5 Conversione in CFU: 7.5 Semestre: 1* Livello: M Link al syllabus: </p> <p>Esame superato: S È richiesta convalida: S</p> <p></p>	
#3	<p>098634 ADVANCED ENVIRONMENTAL SYSTEMS ANALYSIS [I.C.]</p> <p>CFU: 10.0 AC: 2* SEM: 1* </p>	<p>Modelling of Water Systems</p> <p>Crediti esteri: 7.5 Conversione in CFU: 7.5 Semestre: 1* Livello: M Link al syllabus: </p> <p>Esame superato: S È richiesta convalida: S</p> <p></p>	
		<p>Environmental Dynamics/Physical Processes</p> <p>Crediti esteri: 7.5 Conversione in CFU: 7.5 Semestre: 1* Livello: M Link al syllabus: </p> <p>Esame superato: S È richiesta convalida: S</p> <p></p>	

After the mobility – Transcript of records (ToR)

International Mobility Programme

THIS IS TO CERTIFY

that the ERASMUS student _____ has successfully completed the following course of the Integrated Master (MSc) in Environmental Engineering:

COURSES	ECTS CREDITS	IST GRADE*	ECTS GRADE
Probabilistic and Statistics	6,0	12	D
Geographical Information Systems	4,5	15	C
Environmental Management System	6,0	17	B
Risk Analysis	6,0	14	C
Environmental Impacts	4,5	15	C

*Scale 0-20

Lisbon, 11th March 2010

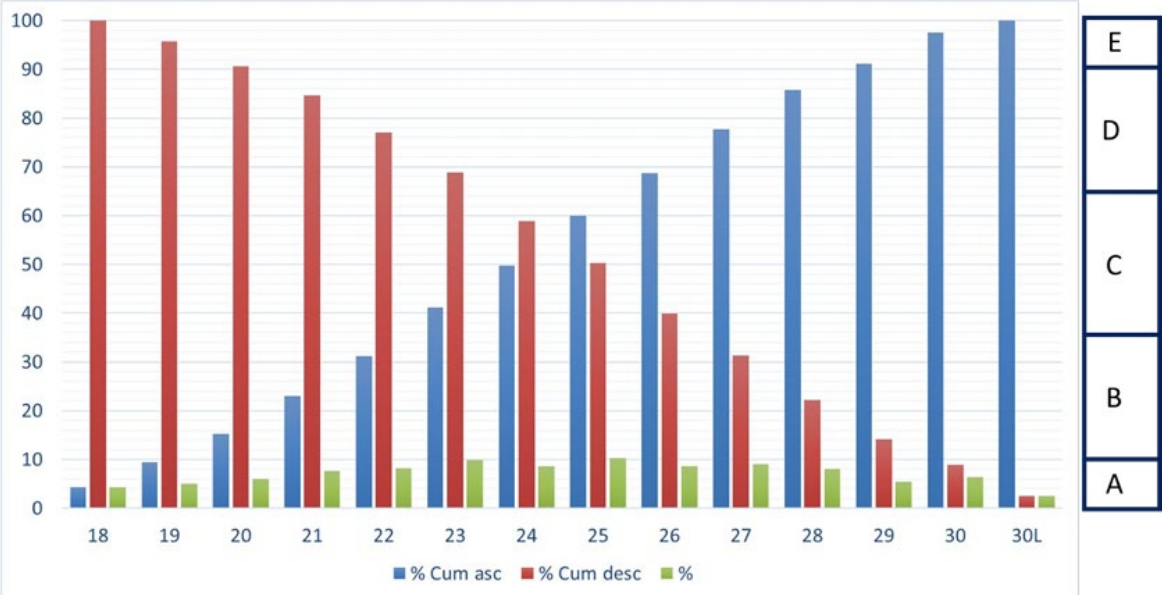
The President of Instituto Superior Técnico



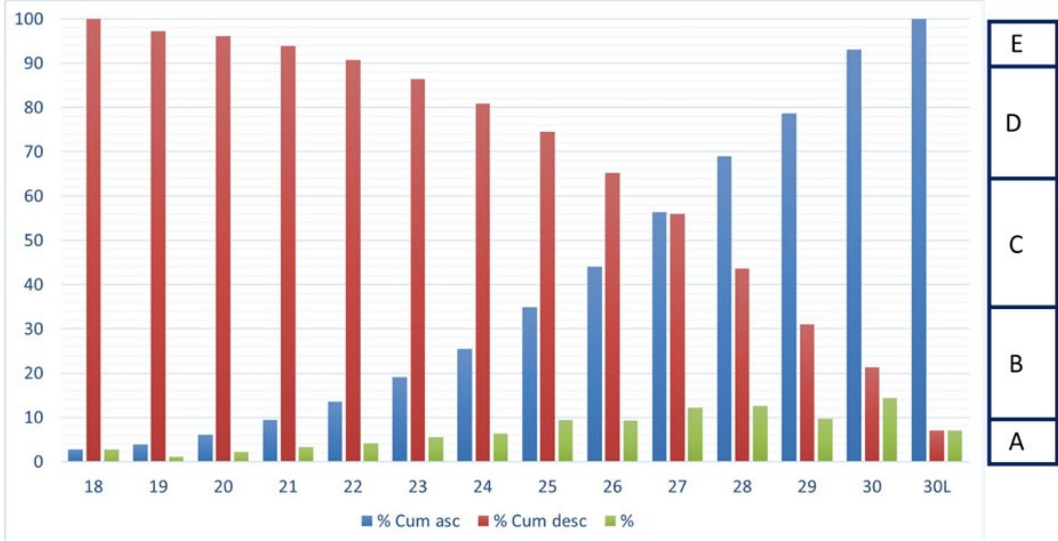
(Prof. António Cruz Serra)

ECTS Grade	% of successful students normally achieving the grade
A	10
B	25
C	30
D	25
E	10
FX	--
F	--

Converting grades - BSc



Converting grades - MSc



Who to contact

Mobility office:

- follows the student in the presentation of the application and for all aspects relating to the forms and administrative aspects.
- provides information on the requirements/constraints of the partner institutions and on the deadlines for submitting applications

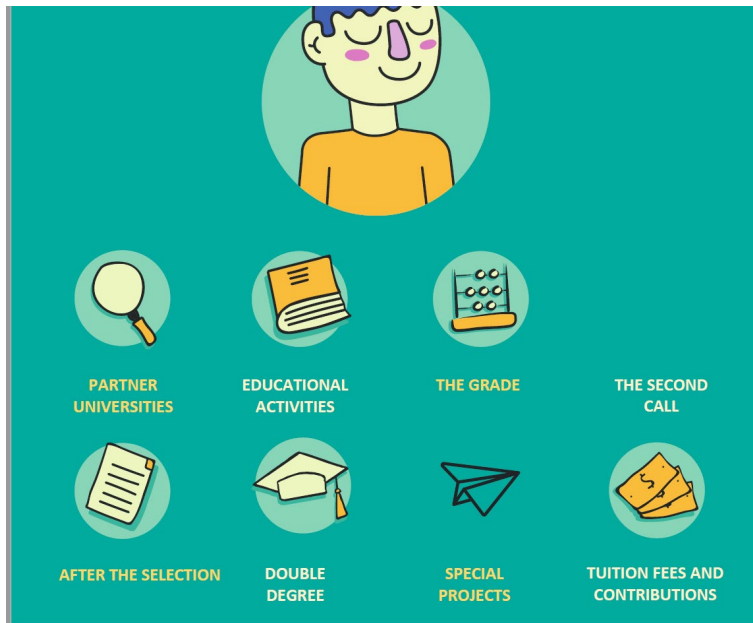
Before writing, always check:

- the FAQs
- the Call
- the School regulation

Mobility coordinators:

- support the students in preparing the study plan for the exchange project
- verify compliance with training objectives, equivalences in terms of topics and credits
- approve the study plan proposed by the students (via OLA the platform)
- evaluate requests for LA change and extension
- Finalize the procedure by validating courses

Check the FAQ first!



Can I see how many preferences a given university received last year?

You can find this information when you complete your application on the Online Services. If the number is '0', this may be a new agreement, or it may indicate that no preference was expressed in the previous year.

Is there a minimum number of credits to be obtained abroad?

Recognition of mobility is not usually subject to a minimum number of credits. Check the Regulation of your Study Programme and the websites of the host universities for specific information.

Can I join the mobility programme if I enrol in a different Study Programme after applying/being selected?

It's possible, but it's not guaranteed. It will be necessary to verify that the exchange agreement with the partner university is available also for the new Study Programmes. If this is not the case, you will have to cancel the mobility.

Where can I find information about the exams approved in the previous years?

You can find this information on the Online Services, in the International Mobility section > Course archive validated within international exchange Programmes. Apply a filter to the School and to the exchange

